



# Recent Projects

- Grand Marina Intercontinental Hotel, Abu Dhabi
- Burj Royale Down Town, Dubai
- Dubai Mall refurbishment, Dubai
- Address Harbour Point, Dubai
- Socio Park Heights III, Dubai Hills
- Big Box – Festival Plaza
- Mashreq Bank HQ, Dubai
- Wafi Mall expansion
- Vida Hotel Creek Harbour – UGCP
- Dubai Hills Business Park by Emaar
- Dubai International Financial Center
- Dubai World Trade Center expansion
- The Address Downtown – NESO restaurant

## Other Projects

- Dubai Opera House
- The Blue Water Warf
- The Beach, JBR
- Burj Khalifa – Security Gate 3 and 6
- The Address Boulevard
- Sofitel Dubai, The Palm
- Saraya Towers, Abu Dhabi
- The Waves – Toyota Showroom, Abu Dhabi
- The Gate District Tower, Abu Dhabi
- The Stock Exchange Building, Abu Dhabi
- City Walk, Dubai



# Grand Marina Intercontinental Hotel – Abu Dhabi

- Various decorative metal finishes in stainless steel & aluminium.
- Various decorative laminated, textured glass cladding, partitions and pivot & hinged doors.



- Stainless steel (Champagne Gold PVD) lift jambs / architraves with LED lights, on all floors.
- All lift jambs are complex curved design with V-grooving for sharp bending & high-quality finish.



- Shower glass doors (clear & frosted), with complete ironmongery.



- Stainless steel (Champagne Gold PVD) various profiles at ceiling and walls.



- Stainless steel (Black PVD) glass frame partition.



- Stainless steel and aluminium ceiling in all day dining area.
- Stainless steel (PVD) window & door frames.



- Stainless steel (black PVD) cladding with MDF backing in All Day Dining area.



- Open kitchen hood in SS & Aluminium, as per project design requirement.

# Big Box – Festival Plaza

## Dubai

- Decorative mashrabia with Plexiglass<sup>®</sup> LED diffuser at the entrance.
- Grey Metal Bulkhead at entrance, Skylight bulkhead and demise capping all over the mall.
- Grey Metal cladding on columns and ceiling.
- Stainless Steel 304:
  - Bollards, Barriers, Guard rails, Crash railing, etc.
  - Columns and ceiling cladding.
  - Lift jambs and profiles.     ▪ Gratings in Mosques.





- IKEA entrance portal on Ground Floor and 1<sup>st</sup> Floor.
- Invisible joints at important areas achieved at site after installation.

Festival Plaza

# AIM TO GIVE THE BEST GIFT EVER

The Festival City Malls Gift Card.  
100+ offers and 120 stores  
to choose from.

f @DubaiFestivalPlaza | Instagram  
DubaiFestPlaza  
DubaiFestivalPlaza.com



- Grey Metal Bulkhead at entrance and Skylight bulkhead.



Decorative metal mashrabiya supporting structure and opal Plexiglass<sup>®</sup> sheets for LED diffusion.

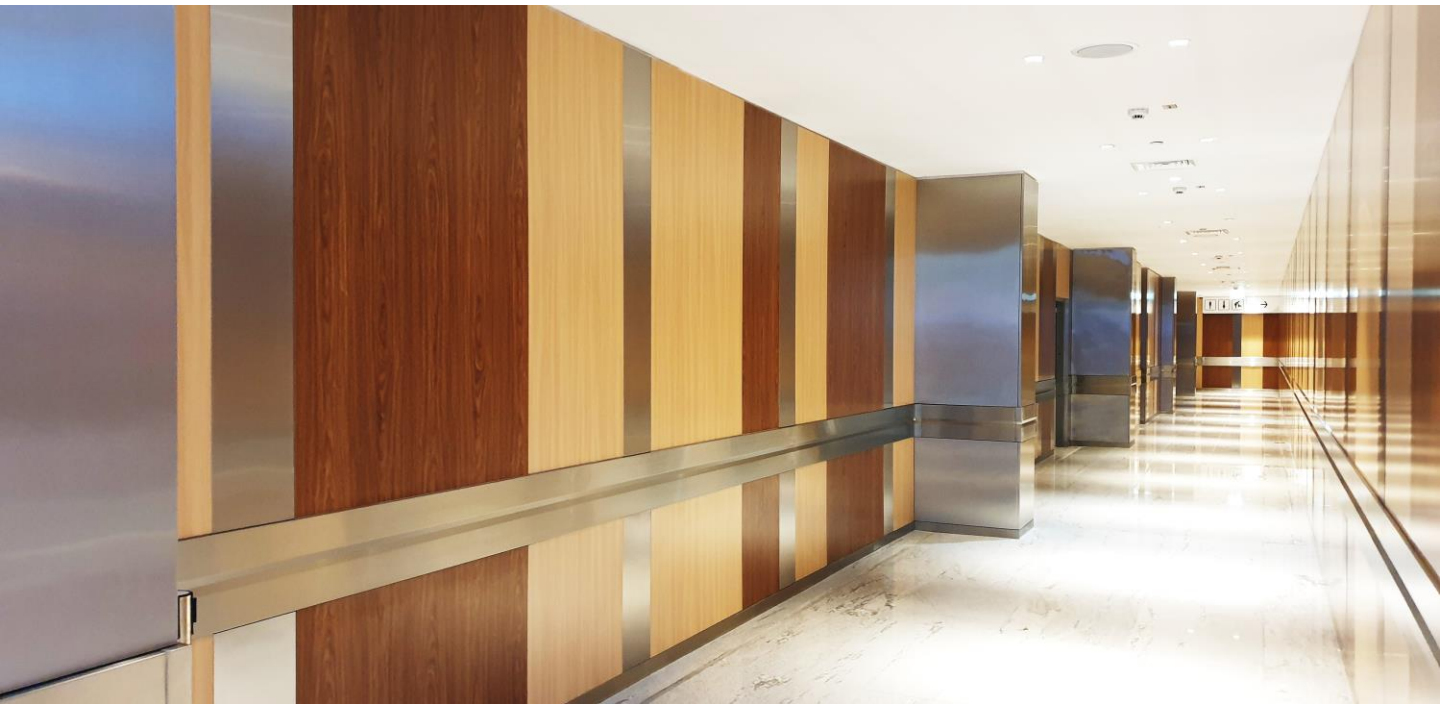


## SS Bollards and Barriers





Right side: SS crash rail wall.



Left side: SS crash rail, wall and column cladding.



SS Lift jamb cladding



SS Guard rail along the glass wall for protection.

SS Guard rail for glass wall protection.



# Mashreq Bank HQ

Dubai

- Decorative Glass wall cladding, Glass doors & large scale logo in Mashreq Bank corporate colour & design.
- SS skirting in customised electroplated finish.
- SS cladding on kitchen Hoods.
- SS cladding on glass feature wall on the ground floor lobby.





- Mashreq Logo wall: Low Iron Laminated glass (6mm+6mm) in Mashreq Bank corporate colour with gradation effect.



- Behind the wall is metal structure as per approved load calculations.



- Laminated Glass cladding in Mashreq Bank corporate colour, with SS frame.



- Laminated Glass cladding in Mashreq Bank corporate colour, with SS frame.
- Joints perfectly matched.

# Wafi Mall Expansion Dubai

- Food Court: Decorative metal finishes in various restaurants.
- Cinema Hall: SS handrail.





KITCHEN 35 Blackened metal cladding and profiles.



SHAWARMA restaurant decorative mashrabiya, structure and cladding.



SHAWARMA restaurant folding window with blackened metal frame.



- Pizza Al Taglio restaurant metal cladding with blackened metal frame.
- Blackened metal decorative mashrabiya.



- Pizza Al Taglio restaurant metal cladding with blackened metal frame.
- Blackened metal decorative mashrabiya.



- Pizza Al Taglio restaurant metal cladding with blackened metal frame.
- Blackened metal decorative mashrabiya.



- Tickets: Blackened metal cladding and profiles.



- Decorative metal barriers as per project requirements.

# Dubai International Financial Center (DIFC)

Dubai

## **Building no 2, 3, 4 and 5, all floors:**

- DIFC Logo wall in lift lobby of all floors: Laser cut metal logo & floor number with black coating.
- Mirrors with metal frame in all floors and buildings.





**Seven black metal logos in a full wall size frame with floor number.**

- Every piece of logo is independently fixed with 2-pin spacer as per CAD file. Position of each of the 4 pieces in a logo and each of the 7 sets on the wall is utmost importance to have properly alignment.
- Picture on the next page shows the side view.



Side view – Fixing details



- Mirrors on MDF backing with black metal frame on all floors and all buildings.
- Provision for concealed LED light along the edge.

# The Address Hotel - NESO

Dubai

## Neso Restaurant

- SS counters with foot rail in specific approved colour.
- Glass shelves with SS cladded counters.
- SS fins feature walls
- SS door cladding.
- Mirrors with SS frame.
- SS lift interior in customised matched colour.





## **NESO restaurant SS and Mirrors:**

- SS cladding on curved counter.
- Curved Antique finish foot rail, floor mounted.



- SS cladding on counter.
- SS cabinet with glass shelves.



- Decorative SS profile cladding on columns and SS fins with skirting



- Low iron glass shelves.



SS frame on  
glass doors.



SS frame on  
glass urinal  
partitions.

Mirrors  
with  
frame.

SS



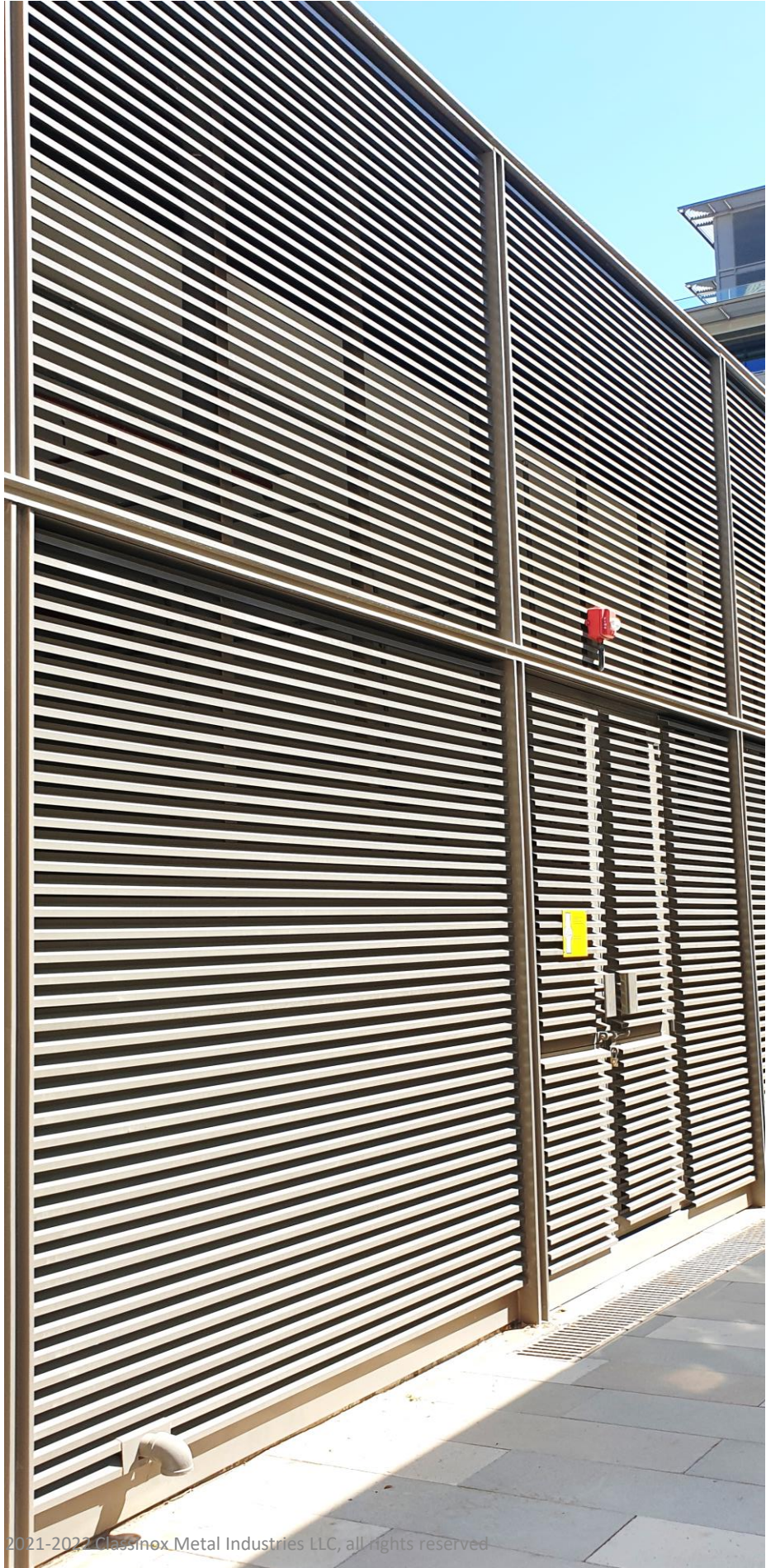
# Dubai World Trade Center Expansion

Dubai



- Customised louvers, powder coated, with frame structure, doors and ironmongery.
- Total 3 building constructed.

- Louvers with metal structure, doors and ironmongery.



# Dubai Opera

Dubai

- Decorative Staircase railing in the main show area.
- 20,000 lm decorative wall inlays with electroplated brass finish.





- Decorative metal wall inlays in electroplated brass finish.
- More than 20,000 lm of decorative metal wall inlays in specified electroplated brass finish on aluminium base.



- Wooden handrail and metal inlays in brass electroplated finish.



- Decorative metal wall inlays in electroplated brass finish.

# Blue Water Wharf

Dubai

## The Retail Area (in EB, EC, SQ, TA, TB & HA Buildings):

- Corten-steel finished wall cladding.
- Illuminated signage in Corten-steel finish.
- Copper Strip inlays on decorative walls.
- Hanging mirrors with blackened steel frame.
- Blackened steel walls & columns cladding in HA building.
- Powder coated counter and wall cladding.
- Decorative metal screen in VVIP area.





- Hanging Mirror with metal frame structure in Blackened Steel finish, customised as per project requirement in all rest rooms.
- Mirror structure is hanging to the ceiling with no base support.



- Illuminated signage wall in antique Corten-steel finish with perforated design as per design consultant's requirement.
- Light diffusion achieved with opal Plexiglass<sup>®</sup> sheets.



- Corridor wall cladding in Corten-steel effect with MDF backing.
- Blackened handles on doors as per project requirements.



- Corridor wall cladding in Corten-steel effect with MDF backing.
- Blackened handles on doors as per project requirements.



- Rest room wall cladding in Corten-steel effect with MDF backing and copper coated inlay strips.

- Blackened steel for antique look on restaurant walls and columns.
- Picture before handing over.



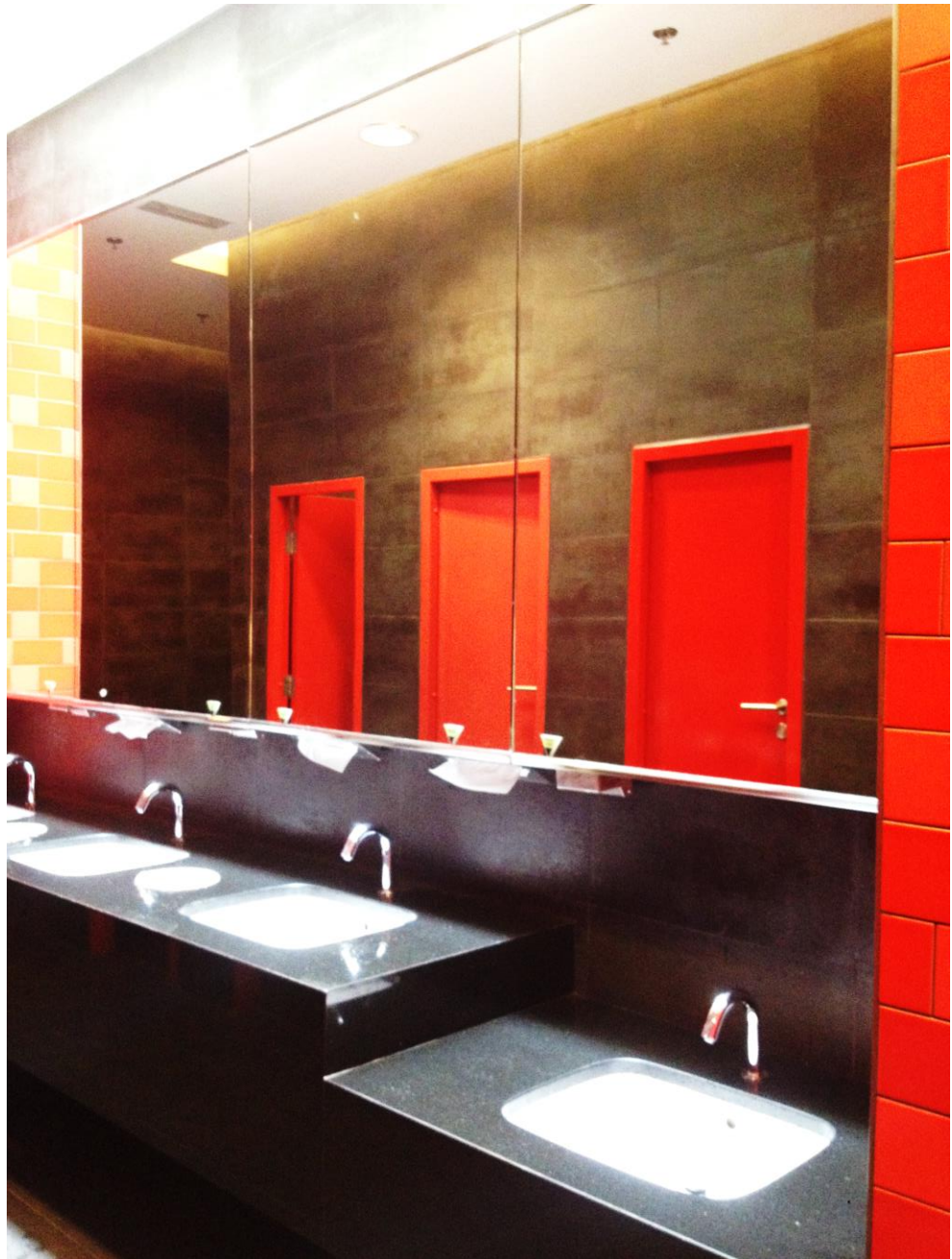


- Decorative metal screen for VVIP area, in 3 parts assembled together at site.
- Above picture is one 1 part at the time of fabrication.

# The Beach

Dubai

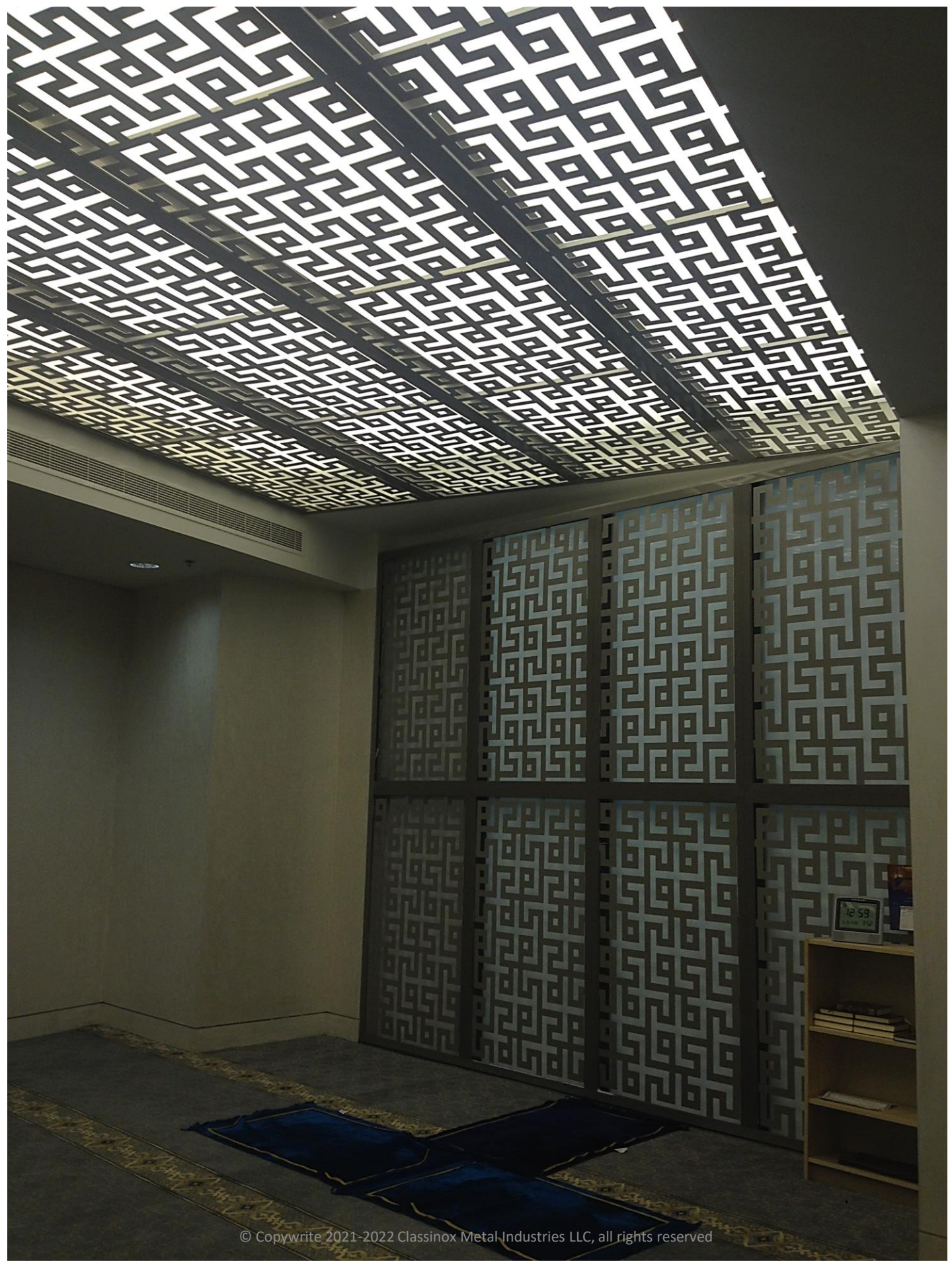
- Mirror cladding with SS frame in public restrooms.
- Mirrors curved wall with SS frame in the Beach area.
- Decorative mashrabiya ceiling in prayer rooms
- Lift interiors







الرجاء اختيار  
بطاقة  
PLEASE HOLD  
YOUR TICKET



# Burj Khalifa

## Dubai

### **Burj Khalifa Gate House # 3 & 6, exterior works:**

- SS Linen finish supply, fabrication & installation for gate house buildings & car scanner building. SS finish is from Rimex, UK as per project specification.
- Wooden (Burma Teak) ceiling & fins.
- SS gratings, channels, angles, SS doors, columns, etc.
- Curved double-glazed safety glass in specified color.





## **Burj Khalifa Gate House # 3 & 6, interior works:**

- SS Cladding, SS customised ceiling, SS frame around curved glass, metal powder coated doors, metallic powder coated ceiling, etc.
- Wooden furniture as per specified design & colour.
- Metal raised floor with top PVC cover.

# Burj Khalifa

Dubai

- SS Show cases with curved glasses, metal ceiling access door, etc
- The show case is displaying the Burj Khalifa artefacts & LCD TV
- with running presentation

